

Novelties

Sensors & Lights

Light & Building 2024



 steinel

Solutions for tomorrow.

As a leading provider of intelligent solutions for sensor technology, lighting and building automation, we work on visionary ideas every day. Ideas that become solutions. Solutions that improve tomorrow. Improvements that mean more efficiency, more sustainability and more comfort.

On the following pages, we show you how we see the future today - and how we are shaping tomorrow with shaping tomorrow with intelligent solutions. In our endeavour to find forward-looking solutions for the best possible tomorrow. We can't help it. We love progress.

We are "The inventors' company".



Table of contents

Sensors

EO	06
Multisensor EO	08
nexx.IS PRO Serie	10
IR Quattro HD DALI duo 24m	12
Twilight switch TS RTC	14
Control PRO II	16

Lights

RS PRO 6150 SC circular	20
RS PRO 5500/5550 SC	22
RS PRO A-Serie	24

System components

KNX	28
DALI-2	30
Bluetooth	31
LiveLink ONE	32
Capstone	34

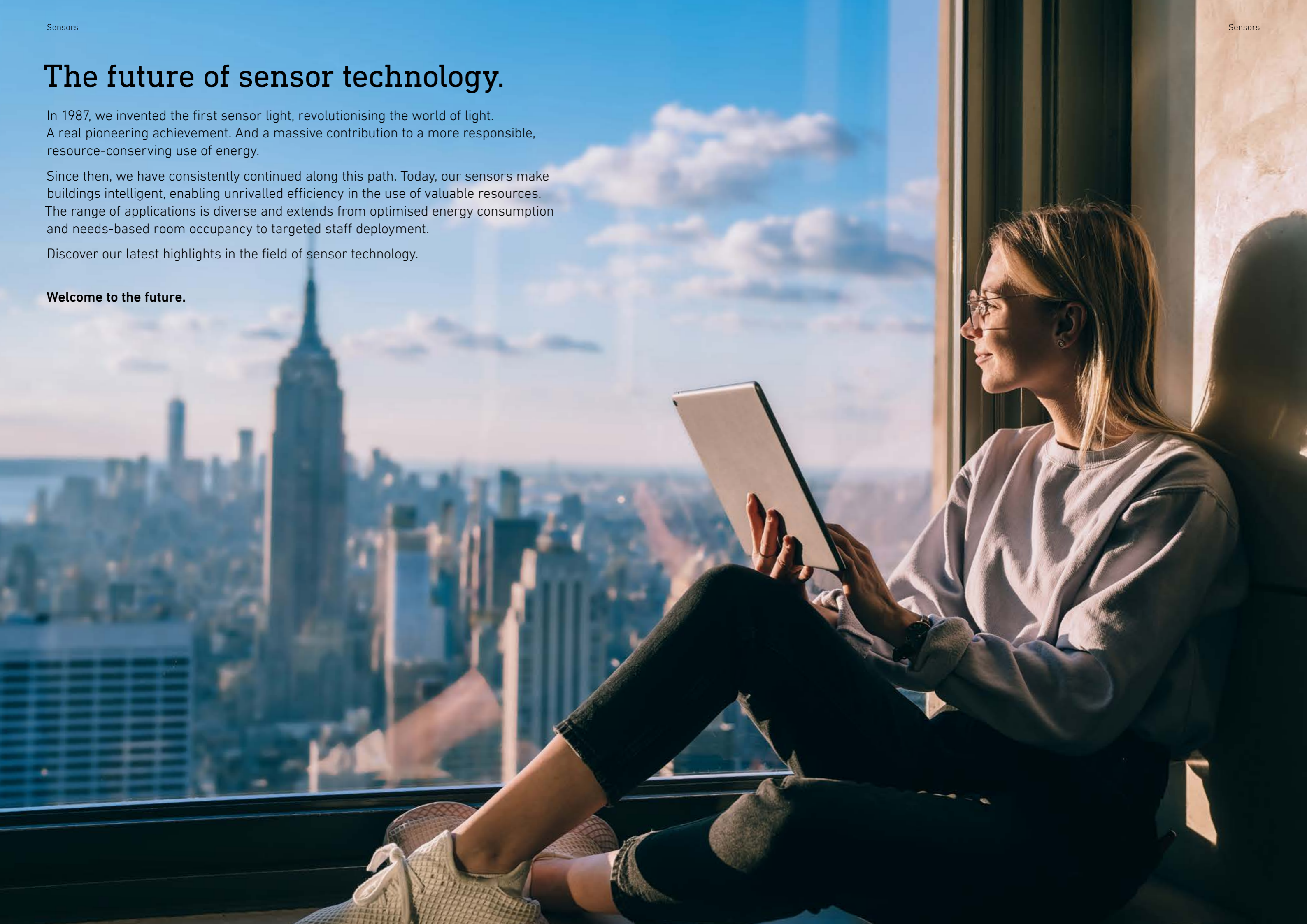
The future of sensor technology.

In 1987, we invented the first sensor light, revolutionising the world of light. A real pioneering achievement. And a massive contribution to a more responsible, resource-conserving use of energy.

Since then, we have consistently continued along this path. Today, our sensors make buildings intelligent, enabling unrivalled efficiency in the use of valuable resources. The range of applications is diverse and extends from optimised energy consumption and needs-based room occupancy to targeted staff deployment.

Discover our latest highlights in the field of sensor technology.

Welcome to the future.



EO. Smart Space Sensor with many detection variables.

From the ceiling, our new Smart Space Sensor detects, localises and counts all the people in the room. Privacy is always guaranteed. This is because the innovative passive infrared matrix sensor does not have a camera and therefore cannot identify people.

Keyword: privacy by design.

How does it work? Via a heat matrix. All existing temperatures are precisely recorded in a precisely adjustable room area of up to 35 square metres. The data obtained is analysed using intelligent software based on the latest AI algorithms. It can be used to precisely identify and locate human heat radiation.

The new technology opens up a wide range of possible applications.

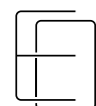
For example in the following areas

- Office space optimisation - people counting, workplace occupancy, flex-desk planning
- Real estate management - optimised use of space/buildings
- Safety & Security - Identification of dangerous heat sources
- Retail analytics - checkout rush, staff planning, optimisation of shelves and walkways
- Elderly Care - Patient Safety
- HVAC - room temperature measurement and improvement of indoor air quality and much more.

Bluetooth MESH



EO



				Technical data Dimensions FM103 x 103 x 49 mm Dimensions SM123 x 123 x 45 mm Sensor type..... Infrared matrix Mounting height2.50 – 3.50 m Angle of coverage360° Detection area (3m height) 7 x 5m Capture matrix..... 96 Fields Detection zones..... max. 10 Protection class.....IP20 Capture variables..... Movement, Presence, EO-People counting and localisation, Brightness, Temperature, Air Humidity
Bluetooth Mesh	Setting via app	Number of persons	Tracking	
				Order details DALI-2 IPD Flush-mounted white 4007841 090081 Surface-mounted white..... 4007841 090098 IP Flush-mounted white 4007841 091064 Flush-mounted black 4007841 091088 Surface-mounted white..... 4007841 091071 Surface-mounted black..... 4007841 091095 KNX Flush-mounted white 4007841 091101 Flush-mounted black 4007841 091125 Surface-mounted white..... 4007841 091118 Surface-mounted black..... 4007841 091132
Zoning	Localisation	Traffic	Fencing	
Brightness	Temperature	Air Humidity	max. 3.50 m	
360°	7x5m at 3m height	Movement	Presence	

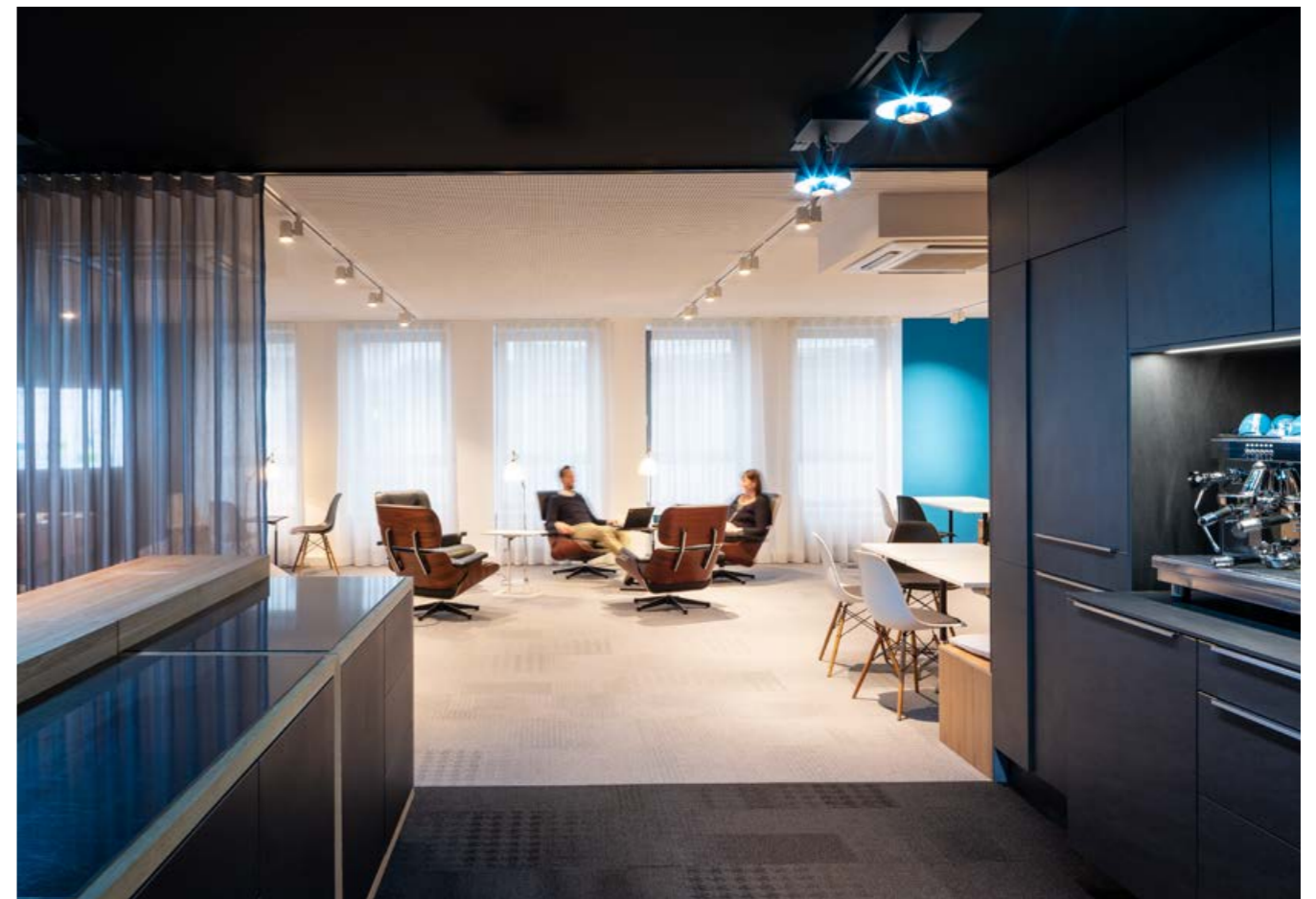
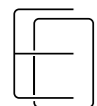
Multisensor EO. Turning rooms into intelligent rooms.

The EO multisensor sets completely new standards on the way to the intelligent room. In addition to the presence and number of people, brightness, temperature and humidity, it also records the concentration of volatile organic compounds (VOCs), the CO2 value, the air pressure and the noise level in a room area. This information can be combined to calculate values such as the risk of infection, stale air, cosiness and dew point. If this data flows into an HVAC control system, the room and building climate can be optimally adapted to the respective requirements.

Bluetooth
MESH



Multisensor EO



				Technical data Dimensions UP..... 123 x 123 x 50 mm Dimensions AP..... 145 x 145 x 45 mm Sensor type..... Infrared matrix Mounting height 2,50 – 3,50 m Angle of coverage 360° Detection area (3m height) 7 x 5m Capture matrix..... 96 Fields Detection zones..... max. 10 Protection class..... IP20 Capture variables..... Movement, Presence, EO-People counting and localisation, Brightness, Temperature, Air Humidity, CO2, VOC, Noise, Air pressure Order details DALI-2 IPD Flush-mounted white 4007841 091149 Surface-mounted white..... 4007841 091156 IP Flush-mounted white 4007841 091163 Flush-mounted black 4007841 091187 Surface-mounted white..... 4007841 091170 Surface-mounted black..... 4007841 091194 KNX Flush-mounted white 4007841 091026 Flush-mounted black 4007841 091040 Surface-mounted white..... 4007841 091033 Surface-mounted black..... 4007841 091057
Bluetooth Mesh	Setting via app	Number of persons	Tracking	
Zoning	Localisation	Traffic	Fencing	
Brightness	Temperature	Air Humidity	Air pressure	
VOC	Noise	max. 3.50 m	7x5m at 3m height	

nexx.IS PRO series.

Eagle eyes see more.

Our nexx.IS PRO series was specially developed for reliable outdoor detection applications and is the ideal solution for building entrances and façades. Thanks to innovative "Eagle Eye" technology, a specific detection area can be improved by 200 per cent when facing the sensor from the front. This means that access areas, for example, can be monitored even more precisely. This is made possible by a small, individually positionable window in the lens. The sensors in the nexx.IS PRO series can be networked via Bluetooth Mesh and offer all Connect functionalities. For example, outdoor lights connected via Bluetooth Mesh can be controlled, timer programmes defined and wireless push-buttons connected.

The innovative sensor family covers three different detection areas. A surface-mounted version with a detection range of 130° or 270° is available for wall mounting. A 360° solution is available for the ceiling, either as a surface-mounted or recessed version. All models are available in the colours white and anthracite.

The nexx.IS PRO series is available with COM1, KNX-Secure and uDIM (leading edge and trailing edge dimming) interfaces. With uDIM, soft light start and ambient light can now also be used with conventional luminaires. Prerequisite: the light source is dimmable.



MD IR N130/270

MD IR N360
Ceiling
installationMD IR N360
Surface-
mounted

Bluetooth Mesh	Setting via app	max. 4,00 m	130°	270°	360°
		Technical data MD IR N130/ 270 Dimensions 116 x 116 x 42 mm Sensor type Infrared Mounting height 1.80 – 3.00 m Angle of coverage 130°/270° Reach Tangential max. 13 m Reach Radial Radius max. 3 m Mounting type Wall Corner wall bracket optional/ included		Technical data MD IR N360 Dimensions Surface-mounted .. 80 x 93 mm Dimensions Deckeneinbau 80 x 74 mm Sensor type Infrared Mounting height 1.80 – 4.00 m Angle of coverage 360° Reach Tangential 13 m Reach Radial Radius 6 m Mounting type Ceiling	
max. 13 m	2 – 2000 lx	Order details MD IR N130 COM1, white 4007841 069056 COM1, anthracite 4007841 069032		Order details Surface-mounted COM1, white 4007841 080006 COM1, anthracite 4007841 079888 KNX, white 4007841 080037 KNX, anthracite 4007841 080013 uDIM, white 4007841 080068 uDIM, anthracite 4007841 080044	
		Order details MD IR N270 COM1, white 4007841 079819 COM1, anthracite 4007841 079796 KNX, white 4007841 079840 KNX, anthracite 4007841 079826 uDIM, white 4007841 079871 uDIM, anthracite 4007841 079857		Order details Ceiling installation COM1, white 4007841 080587 COM1, anthracite 4007841 087432 KNX, white 4007841 080594 KNX, anthracite 4007841 087449 uDIM, white 4007841 080600 uDIM, anthracite 4007841 087456	
IP54	Eagle Eye technology	COM1 Mains connection 220 – 240 V, 50/60 Hz Switching load max. 600 W LED uDIM Mains connection 220 – 240 V, 50/60 Hz Switching load 5-100 W LED Dimming Phase start/end KNX Supply voltage KNX-Bus KNX Secure yes			

IR Quattro HD DALI duo 24m. Great solution. Not only in the classroom.

For 15 years now, the name "IR Quattro HD" has been synonymous with excellent performance in infrared detection with mechanical range adjustment. The new IR Quattro HD DALI duo continues this tradition confidently and convincingly.

Classrooms, conference rooms and larger offices are the primary areas of application for the new IR Quattro HD DALI duo. The pleasantly compact infrared presence detector, equipped with two light channels, contains a fully-fledged, intelligent light management system. The ideal prerequisites for creating customised light and a good learning and working atmosphere. Even including switchable lighting - thanks to the integrated relay.

In short: a worthy new addition to the "IR Quattro HD" family, which is ideal for constant light control in classrooms. Incidentally, top marks are also awarded for commissioning, which is carried out via the practical Smart Remote app and is extremely simple.



IR Quattro HD DALI duo 24m



				Technical data Dimensions SM 120 x 120 x 65 mm Dimensions CM 120 x 120 x 119 mm Mains connection 220 - 240 V, 50/60 Hz Switching load Relay max. 600 W LED Number of DALI devices 64 DALI communication addressable 2 groups/ Broadcast Sensor type Infrared Mounting height 2.50 - 10.00 m Angle of coverage 360° Reach Radial 8 x 8 m Reach Tangential 20 x 20 m Reach Presence 8 x 8 m Switching zones 4800 Twilight setting 10 - 1000 lx Time setting 5 s - 60 min. Basic light function Yes Basic light function time 1 - 60 min., all night Adjustable main light 50 - 100 % Twilight setting Teach Yes Constant light control Yes Protection class IP20 Temperature 0 to 40°C Housing UV-resistant plastic Mounting type Ceiling
2+1 Light channels	max. 10.00 m	360°	8 x 8 m presence	
HD			IQ	
4800 zones	10 - 1000 Lux	5 sec - 60 min	IQ-mode	
	ON/ OFF			Order details Surface-mounted 4007841 088835 Ceiling installation 4007841 088828 Smart Remote 4007841 009151
3 Push-button inputs	ON/OFF Relay			

Twilight switch TS RTC.

Modern design meets smart comfort.

Night-time lighting - but the smart way: The TS RTC twilight switch, equipped with modern Bluetooth technology, has a straightforward design and scores points for its outstanding ease of use. The scheduler function in the STEINEL Connect app can be used to define various scenes and settings depending on the day and time. This is practical if the lighting control is to be coordinated with opening times - working days have different requirements to Sundays and public holidays. The Real Time Clock and the 7-day battery memory ensure reliable and permanently functioning light management.

Thanks to Bluetooth Mesh, the TS RTC can be connected and adjusted wirelessly with various STEINEL Connect lights. The twilight switch is available in white and anthracite.



 Bluetooth MESH Bluetooth Mesh	 Setting via app	 max. 4.00 m	 1 - 1000 lx	Technical data Dimensions 38 x 95 x 95 mm Mains connection 220 - 240 V, 50/60 Hz Sensor type Light sensor Model Twilight switch Mounting height 1,80 - 4,00 m Twilight setting 1 - 1000 lx Twiligh setting Teach Ja Switching capacity max. 250 W LED
 IP54	 Scheduler	 Battery storage	 Real Time Clock	
LED max. 250W				Order details white 4007841 089122 anthracite 4007841 089139

Now even more extensive functionality in the DALI-2 APC interface of the Control PRO II series.

From now on, any lighting task can be solved, regardless of whether it is a new build or a renovation. In addition to DALI cabling, a wireless connection via Bluetooth is now also possible - a hybrid solution combining wired and wireless is also possible.

Standard:

- DALI-2 Application Controller
- BT Mesh compatible
- DALI-2 certified
- Multimaster capable
- 128 mA supply current
à 64 DALI devices

New

- 4 Lighting groups + multizone
- Support for DALI-2 and BT Mesh accessories
- Extended push-button integration
Push-button: Push-button input (1), DALI (16), Bluetooth (16)
- Folding door function and timer function
- Optimised commissioning with the STEINEL Connect app



True Presence®

- 360° high-frequency sensor
- Mounting height max. 12 m
- Range Ø 15 m

EAN 4007841 064495 | Flush-mounted
EAN 4007841 064501 | Surface-mounted



Multisensor True Presence®

- 360° high frequency sensor
- Mounting height max. 12 m
- Range Ø 15 m
- 7 Capture variables

EAN 4007841 081829 | Flush-mounted
EAN 4007841 081812 | Surface-mounted



Hallway

- 360° high frequency sensor
- Mounting height max. 4 m
- Range 25 x 3 m

EAN 4007841 086398 | Flush-mounted
EAN 4007841 086367 | Surface-mounted



HF 360-2

- 360° high frequency sensor
- Mounting height max. 4 m
- Range Ø 12 m

EAN 4007841 086619 | Flush-mounted
EAN 4007841 086602 | Surface-mounted



IR Quattro HD -2 24m

- 360° infrared sensor
- Mounting height max. 10 m
- Range 24 x 24 m

EAN 4007841 064372 | Flush-mounted
EAN 4007841 064389 | Surface-mounted



The future of light.

Because not all light is the same, we have the right lighting solution for every application in our programme. What's more, thanks to Connected Lighting, various luminaires can be connected to intelligent lighting systems impressively quickly and surprisingly easily via Bluetooth Mesh.

Whether as a stand-alone solution or as an intelligently networked and resource-saving lighting system - our lighting solutions make all the difference. And combine simple handling with high lighting comfort, outstanding energy efficiency and exemplary sustainability.

Discover our latest lighting highlights.

Welcome to the future.

RS PRO 6150 SC circular. Our circular economy miracle.

Pioneering efficiency and sustainability - this is how our new RS PRO 6150 SC circular luminaire presents itself. The product is 100 per cent "made in Europe", stands for short transport routes and was conceived and made entirely in the spirit of the circular economy.

The low-maintenance, modular luminaire is made from 99% recycled plastic. If the components designed for a particularly long service life, such as the sensor, power supply unit or LED card, ever stop working, they can be easily replaced.

The ambient light function and intelligent sensor technology reduce the running times of the lighting components, further increasing their service life. Whether in industrial environments, multi-storey car parks and underground car parks or in storage and basement areas - the wide beam angles always guarantee maximum light output. And the intelligent sensor technology in conjunction with Connected Lighting via Bluetooth always ensures maximum energy efficiency.

And to close the circle at the end, every luminaire is returned to the material cycle at the end of its long product life thanks to the take-back concept. Put your hand on it!



RS PRO 6150 SC circular



A sustainable cooperation
Intelligent, sensor-based lighting control for maximum energy and CO2 savings paired with a luminaire that has a recycle content of 99% and is also repairable - we have realised this combination with our cooperation partner PRACTH in the RS PRO 6150 circular SC.



				Technical data Dimensions 1.500 x 90 x 80 mm Mains connection 220 – 240 V, 50/60 Hz Power 43.5 W Luminous flux 6.412 lm Light colour 4.000 K / SDCM 3 Colour rendering Ra ≥ 80 LED cooling system.. Passive-Thermo-Control Light source..... LED interchangeable Sensor type..... High frequency, 24 GHz Reach Radial Ø 8 m Reach Tangential..... Ø 8 m Angle of coverage 360° Twilight setting 2 – 2.000 lx Time setting..... 5 sec – 60 min, brightness-controlled Basic light..... 0 – 100 % Main light 0 – 100 % Impact resistance..... IK08 Protection class..... IP65 Temperature..... - 20° to +40 °C Functions Motion sensor, DIM function, Dimming curve individually adjustable, Adjustable fade time, Semi/fully automatic, light sensor, Neighbour group function, Encrypted communication, Timer switch, Single or central battery emergency light, Group parameterisation, Orientation light
Bluetooth Mesh	Setting via app	max. 4.00 m	360°	
max. Ø 8 m	2 – 2.000 lx	5 sec – 60 min	Basic light	
Main light	Soft-Start / -End	IP65	IK08	
Order details 6150 SC circular..... 4007841 089856 6150 SC EM circular 4007841 089863				

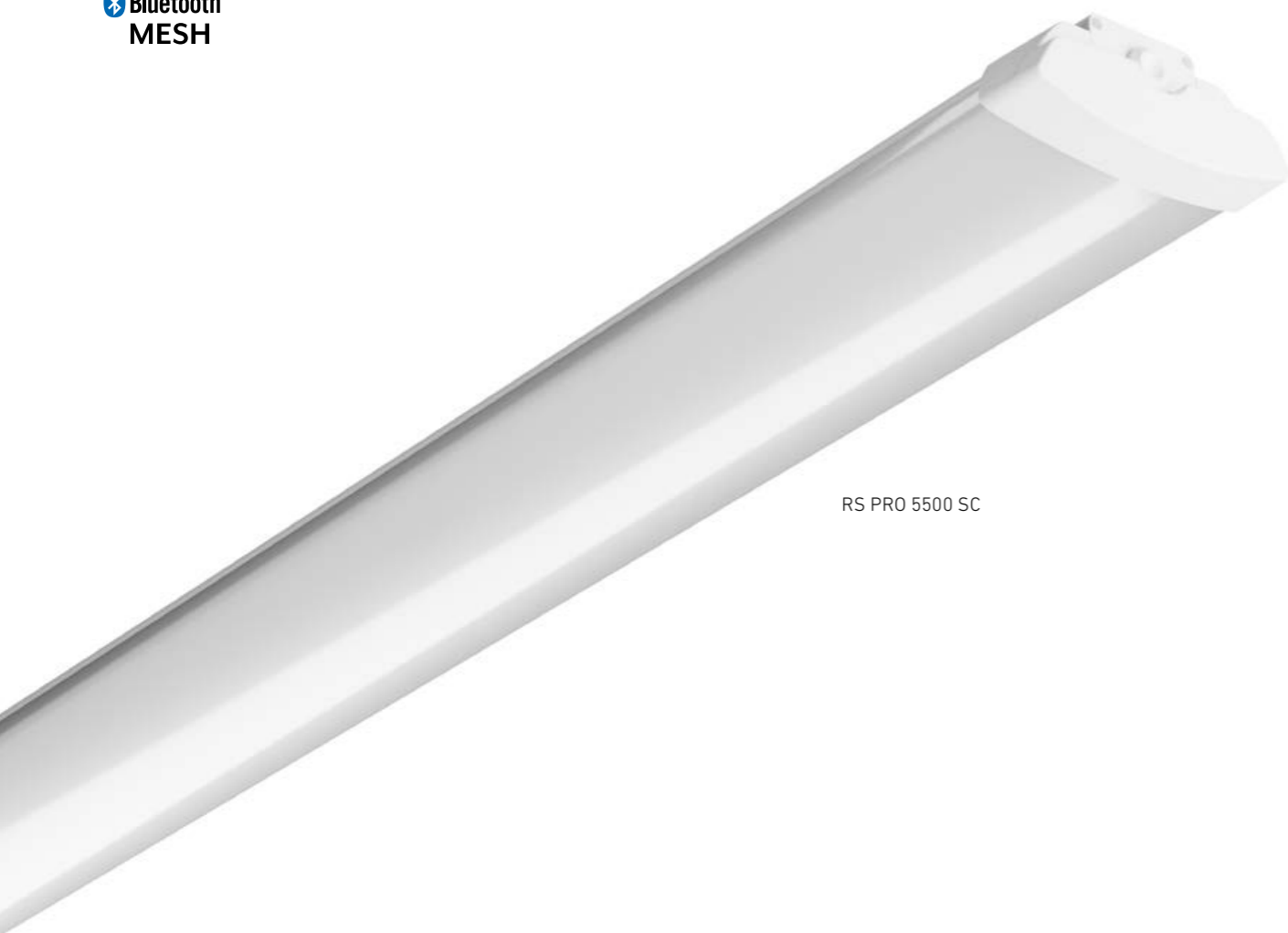
RS PRO 5500/5550 SC.

Attractive linear luminaires - visually, technically and energetically.

Our two new RS PRO 5500 / 5550 SC linear luminaires cut an excellent figure in industrial environments as well as in passageways and office environments. In addition to their attractive appearance, their inner values are of course also impressive.

The lights offer pleasant lighting comfort and are also a shining example of exemplary energy efficiency - also, but not only, thanks to the Bluetooth-based benefits of STEINEL Connected Lighting. Thanks to new high-frequency technology with 24 GHz, detection ends at the wall. Added to this is the centimetre-precise range setting, which in turn ensures even greater detection sensitivity.

For better reparability and the longest possible service life, the lights are deliberately modular in design and thus follow our sustainability approach. This means that the sensor, control gear, LEDs, emergency lighting battery and emergency lighting control gear can be replaced as spare parts by a specialist in addition to the cover. The cable with 5-core through-wiring can also be inserted on both sides or from the rear. The standard SC version enables an emergency lighting function on the central battery. The SC EM version is available for a decentralised single battery solution for 3 hours of emergency lighting.



RS PRO 5500 SC



<p>Bluetooth MESH</p>	<p>Setting via app</p>	<p>max. 4.00 m</p>	<p>360°</p>	<p>Technical data</p> <p>Dimensions 5500 SC.....1.200 x 164 x 75 mm Dimensions 5550 SC.....1.500 x 164 x 75 mm Mains connection 220 – 240 V, 50/60 Hz Application wall, ceiling Power (5500) 30.5 W, 140.6 lm/W Luminous flux (5500) 4288 lm Power (5550)..... 43.5 W, 141.7 lm/W Luminous flux (5550) 6163 lm Colour rendering Ra ≥ 80 LED cooling system.. Passive-Thermo-Control LED service life.....60.000 h Sensor type..... High frequency, 24 GHz Electronic scalability Yes Reach Ø 8 m Angle of coverage 360° Twilight setting 2 – 2.000 lx Time setting 5 sec – 60 min Basic light 1 – 100 % Main light 0 – 100 % Permanent light..... Switchable Soft light start..... Yes Impact resistance IK07 Emergency light Single or central battery</p> <p>Order details</p> <p>RS PRO 5500</p> <p>SC WW4007841 087289 SC EM WW4007841 087272 SC NW 4007841 086084 SC EM NW 4007841 086862</p> <p>RS PRO 5550</p> <p>SC WW4007841 087302 SC EM WW4007841 087296 SC NW4007841 086091 SC EM NW4007841 086879</p>
<p>max. Ø 8 m</p>	<p>2 – 2.000 lx</p>	<p>5 sec – 60 min</p>	<p>1-100%</p> <p>Basic light</p>	
<p>0-100%</p> <p>Main light</p>	<p>Soft light start</p>	<p>IP44</p>	<p>IK07</p>	
			<p>Simple repair</p>	

RS PRO A series. Elegant and robust.

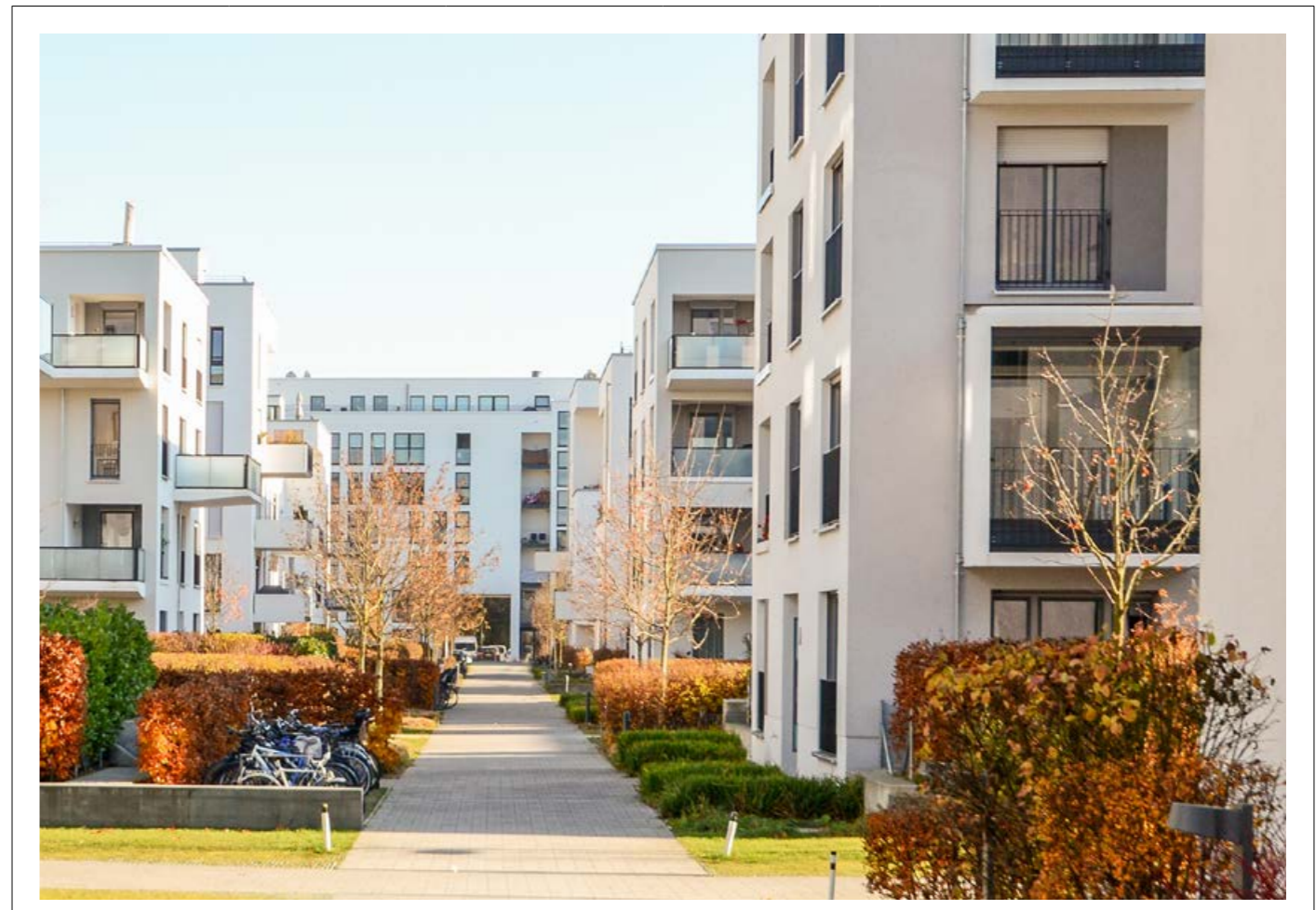
Sophisticated design for demanding environments: Equipped with a powerful high-frequency sensor and an attractive and robust aluminium chassis, the A series is ideal for pergolas or similar applications thanks to its IK10 impact resistance and tested IP54 protection class.

In combination with our Connected Lighting system, the luminaires can be controlled using a wireless push-button. Semi-automatic operation, timer functions, the setting of neighbour groups and tracking light can also be implemented quickly and easily using Connected Lighting. Of course, cross-series networking is also possible at any time without any problems. Connection to central battery systems possible.

Bluetooth
MESH



RS PRO A20 SC



<p>Bluetooth MESH</p>	<p>Setting via app</p>	<p>max. 4.00 m</p>	<p>360°</p>	<p>Technical data</p> <p>Dimensions A10 Ø 190 x 69,3 mm Dimensions A20 Ø 260 x 69,3 mm Dimensions A30 Ø 330 x 69,3 mm Mains connection 220 – 240 V, 50/60 Hz Power A10 10.7 W, 106.3 lm/W Power A20 12.4 W, 117.8 lm/W Power A30 20.6 W, 128.1 lm/W Luminous flux A10 1137 lm Luminous flux A20 1461 lm Luminous flux A30 2638 lm Light colour 3.000 K / 4.000 K Twilight setting 2 – 2000 lx Time setting 5 s – 60 min Basic light function Yes Basic light function Zeit 1 – 60 min. Basic light adjustable 0 – 100 % Adjustable main light 0 – 100 %</p> <p>Order details</p> <p>RS PRO A10 SC 3000 K, anthracite 4007841 085315 3000 K, white 4007841 085316 4000 K, anthracite 4007841 085308 4000 K, white 4007841 085309</p> <p>RS PRO A20 SC 3000 K, anthracite 4007841 085339 3000 K, white 4007841 088330 4000 K, anthracite 4007841 085322 4000 K, white 4007841 088323</p> <p>RS PRO A30 SC 3000 K, anthracite 4007841 085353 3000 K, white 4007841 088354 4000 K, anthracite 4007841 085346 4000 K, white 4007841 088347</p>
<p>max. Ø 8 m</p>	<p>2 – 2.000 lx</p>	<p>5 sec – 60 min</p>	<p>0-100%</p> <p>Basic light</p>	
<p>Main light</p>	<p>Soft light start</p>	<p>IP54</p>	<p>IK10</p>	
<p>3 Sizes</p>	<p>Ø 190 mm</p>	<p>Ø 260 mm</p>	<p>Ø 330 mm</p>	

GUIDANCE protection for our sensors. System components from STEINEL.

We are expanding our portfolio to include high-quality system components for DALI, KNX and Bluetooth. For seamless integration and maximum compatibility, you now get sensors, interfaces and actuators from a single source. You can rely on our proven quality and expertise for a smooth and efficient system.

In the new STEINEL Capstone software, you also have the option of visualising the building down to room level, including the installed products.

From the control cabinet to the room.

KNX stands for connectivity, flexibility and future-proofing. It enables the seamless integration of a wide range of devices and systems, regardless of the manufacturer. This means that lighting, heating, ventilation, security systems and other functions can communicate with each other and be controlled centrally.

With the introduction of our new KNX system components, we now cover the entire range of sensors, power supplies, couplers, switching/blind actuators, dimming actuators and DALI gateways. These components form the backbone of every KNX system and make it possible to cater to the individual requirements and needs of a building. And all with a **5-year manufacturer's guarantee**.



KNX V4.0

With its extended functions, our KNX application 4.0 is the ideal solution for smart buildings of all kinds. Welcome to the era in which innovation and technology redefine the limits of what is possible. KNX Data Secure makes our sensors a little more secure from V4 onwards. Secure? Secure!

- KNX Data Secure
- Bluetooth integration
- New functions
- Even more extensive
- Greater flexibility

System Devices

The centrepiece of the system, the secret stars. Nothing works without them, no bit goes over the bus without them.



P640 KNX
Power Supply 640mA
EAN 4007841 084882



P1280 KNX
Power Supply 1280mA
EAN 4007841 085667



DALI64 KNX-S
1-ch DALI-Gateway
EAN 4007841 089207



DALI128 KNX-S
2-ch DALI-Gateway
EAN 4007841 089214



USB100 KNX
USB Interface
EAN 4007841 085674



ALC100 KNX-S
Area/Line Coupler
EAN 4007841 085643



DIM4 KNX-S
4-ch Dimming Actuator
EAN 4007841 089191

Light Control

Want convenient lighting control? No problem, with our lighting actuators we can adapt to any situation.

Universal Actuators

Switching or shutter function can be set. As a shutter actuator, the neighbouring outputs (A1/A2, A3/A4...) form a shutter channel. Bistable 16A relay.



UA6 KNX-S
6/3-ch Universal Actuator
EAN 4007841 089160



UA16 KNX-S
16/8-ch Universal Actuator
EAN 4007841 089177



UA24 KNX-S
24/12-ch Universal Actuator
EAN 44007841 089184

Universal Interfaces

Inputs for querying conventional, potential-free contacts in KNX systems and sending telegrams to the KNX bus for signalling statuses, meter readings, operating loads, etc.



UI2 KNX-S
Universal Interfaces Secure
EAN 4007841 089221



UI4 KNX-S
Universal Interfaces Secure
EAN 4007841 089238



UI8 KNX-S
Universal Interfaces Secure
EAN 44007841 089245

DALI-2 components

The range of functions of DALI-2 has increased significantly compared to its predecessor. The integration of push-buttons, dimmers and relays opens up new possibilities in building and lighting control. With the STEINEL system components, we have 100 % compatibility as standard and you now get everything from a single source: sensors, actuators and repeaters.



Push-button coupler PC4-DALI2

- Integration of up to four commercially available standard push-buttons
- Installation in flush-mounted box
- Functions freely programmable via app

EAN 4007841 082123



Rotary dimmer RDIM-DALI2

- Intuitive switching and dimming of the lighting
- IPD for connection to DALI-2 APC
- Dimming proportional to the rotation speed

EAN 4007841 082130



Relay REL5A-DALI2

- Integration of circuits into the DALI control system, e.g. panel light
- Installation in flush-mounted box

EAN 4007841 082109



PB2 / PB4-Wireless pushbutton

- Can be used anywhere, no power supply required
- Flexible and easy to retrofit and convert
- Customised control of Bluetooth Mesh products
- Screw and adhesive mounting possible

PB2 | EAN 4007841 084653

PB 4 | EAN 4007841 084660



Push-button coupler PC4-Bluetooth

- Integration of up to four commercially available standard push-buttons
- Installation in flush-mounted box
- Functions freely programmable via app

EAN 4007841 067342



Rotary dimmer RDIM-Bluetooth

- Intuitive switching and dimming of the lighting
- Dimming proportional to the rotation speed

EAN 4007841 067328



Repeater REP-DALI2

- Additional power supply for the DALI line to fully utilise the number of devices
- Bidirectional communication for installing additional DALI-2 IPDs

EAN 4007841 082116



Broadcast Module-DALI2

- Extension of the DALI line by additional devices
- Up to 64 additional devices possible
- Unidirectional broadcast control from repeater possible

EAN 4007841 084981



Relay REL5A-Bluetooth

- Integration of switched loads into the Bluetooth Mesh system
- Installation in flush-mounted box

EAN 4007841 067335



BT-IP Gateway

- Connection of Bluetooth Mesh systems to IP networks via MQTT
- Transmission of status information of the lights and sensors
- Remote settings and override possible

EAN 4007841 091309



BT-DALI Gateway

- Integration of DALI luminaires into the Bluetooth Mesh system
- No cable required between sensor and DALI luminaire
- Broadcast up to 64 luminaires

EAN 4007841 067311

Bluetooth system components

Bus functionality during renovation - without any new cables. This is now possible with STEINEL Bluetooth components. The latest mesh version of the proven wireless technology sets completely new standards and is used wherever simple modernisation needs to be implemented quickly and cleanly.



LiveLink ONE. User-friendly multi-room light management.

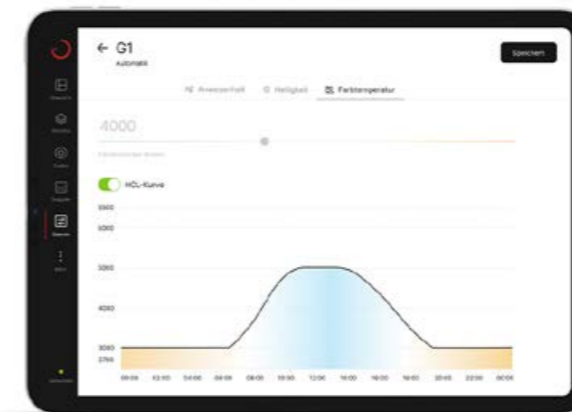
Lighting management offers companies across all sectors enormous opportunities - for example to reduce costs, increase lighting quality and employee satisfaction and achieve their own sustainability goals. And with the new LiveLink ONE® app, installation and operation are easier and safer than ever before. The result: real plug and play lighting management at the click of a button.

Whether in huge logistics halls, glazed office complexes, universities or underground car parks - energy-efficient lighting with light management is an enormous benefit in all applications. Users can also flexibly adapt the light to their individual preferences and different work tasks. The new LiveLink ONE® app was developed in close cooperation with customers and users to guarantee the best possible commissioning of the light management system. With many innovative features, light management becomes a simple and safe affair.



Maximum convenience. Minimal installation effort.

LiveLink is ready for operation and fully functional from the very first start. All system participants are recognised automatically and can be easily adapted to the individual project via the user-friendly LiveLink ONE® app. Practical: the system can be configured by the installer in any order. The functionality is always retained.



More flexibility. More light quality.

Intelligent lighting management improves the quality of light and increases visual comfort. LiveLink ONE® offers numerous preset features such as Human Centric Lighting and functions for daylight-dependent control and presence control. Lighting scenes can also be flexibly programmed and called up at the touch of a button, either via push-button or app. This means: always exactly the right light for the various tasks and individual requirements.



Control unit LiveLink WiFi

- DALI-2 APC max. 64 participants
- Commissioning via WLAN and app

EAN 4007841 013653

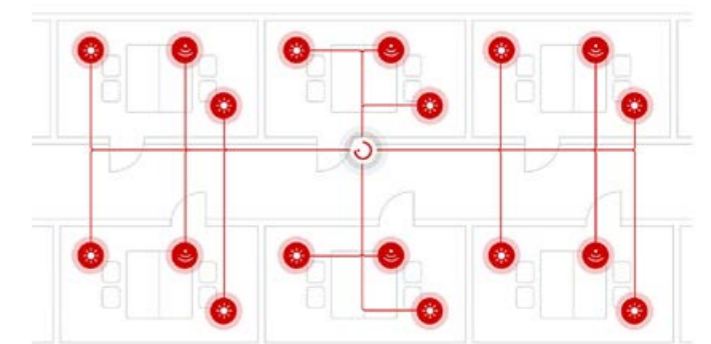
DIN rail controller LiveLink LAN DR

- DALI-2 APC max. 64 participants
- Commissioning via Wlan and app
- Connection to higher-level systems via MQTT

EAN 4007841 055455

Multiroom. One controller, many options.

With the LiveLink ONE® app, lights can be individually grouped and controlled. The newly integrated multi-room function enables both individual control of individual rooms and centralised, cross-room control. This optimises the utilisation of a DALI-Line and simplifies commissioning, as only one controller is required.



LiveLink ONE® is available on all platforms and devices (iOS and Android) and replaces the previously common app solutions LiveLink Install and LiveLink Control. Systems that have already been installed are recognised by LiveLink ONE® and transferred with all configuration details.

Capstone closes the gap between hardware and software.

With the new Capstone software solution, it is possible for the first time to recognise all IP and Bluetooth sensors and lights in the network and visualise them. To do this, Capstone creates an independent network and provides a complete overview of the building status: temperature, humidity, CO2, VOC, noise, smoke, presence, brightness and number of people.

Based on the analysed data, optimisation proposals for a better energy balance can then be drawn up.

capstone^o



STEINEL GmbH
Dieselstraße 80-84
33442 Herzebrock-Clarholz
Germany

Telefon +49 (0) 5245-448-0
Telefax +49 (0) 5245-448-197
www.steinell.de
youtube.com/steinellgmbh

